

# MONTHLY MEMBERSHIP PROGRESS REPORT

LOCATION KENTUCKY

District 43 K

Results as of: 3/31/2022

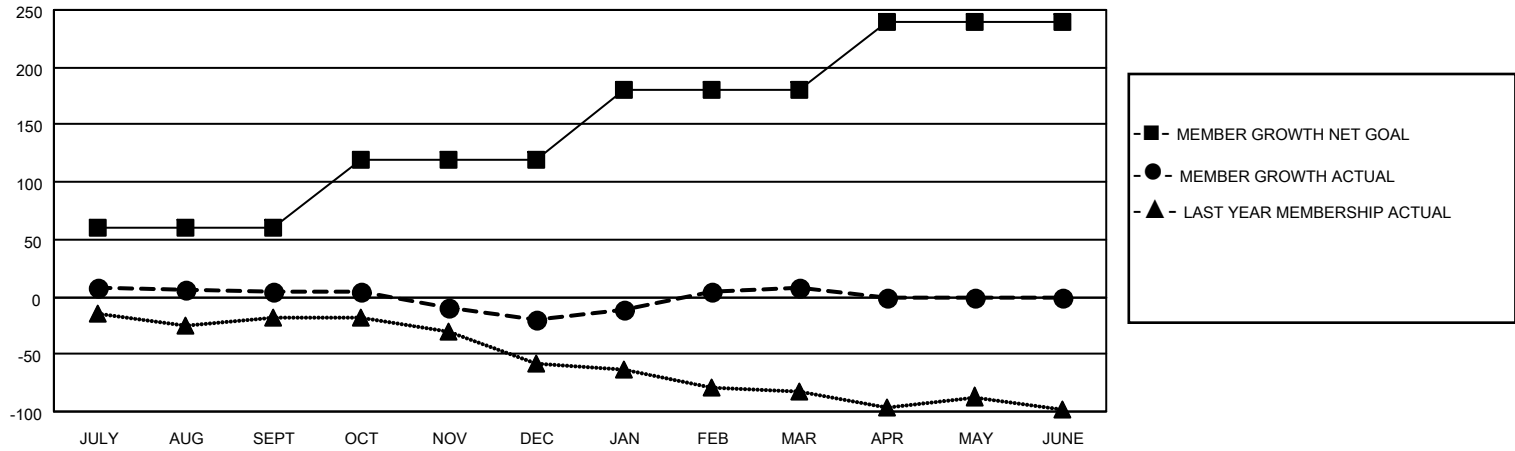
Clubs			
RESULTS FOR 2021-2022			
QUARTER	NEW CLUB GOAL	NEW CLUBS	DROPPED CLUBS
JULY/AUG/SEPT	0	0	0
OCT/NOV/DEC	1	0	0
JAN/FEB/MAR	0	0	1
APR/MAY/JUNE	1	0	0

Members			
RESULTS FOR 2021-2022			
QUARTER	MEMBER GROWTH NET GOAL	MEMBER GROWTH ACTUAL	DROPPED MEMBERS ACTUAL (including transfers)
JULY/AUG/SEPT	60	63	49
OCT/NOV/DEC	60	32	56
JAN/FEB/MAR	60	70	38
APR/MAY/JUNE	60	0	0

**GOALS AND ACTUAL NEW CLUBS CUMULATIVE**



**GOALS AND ACTUAL MEMBERS CUMULATIVE**



**DROPPED CLUBS: 1**

**35 CLUBS OF 70 ADDED 1 OR MORE NEW MEMBERS**

**GENDER DISTRIBUTION**

**DROPPED MEMBERS**

DECEASED	24
CLUB CANCELLED	5
OTHER	114
<b>TOTAL</b>	<b>143</b>

[CLICK HERE FOR CUMULATIVE MEMBERSHIP DATA](#)

MALE	1,243 (65.66%)
FEMALE	650 (34.34%)
NON BINARY	0 (0.00%)
PREFER NOT TO ANSWER	0 (0.00%)

TOTAL FAMILY UNIT MEMBERS 336

FAMILY MEMBERS PAYING HALF DUES 172